



EXCEEDING YOUR EXPECTATIONS....



**FACADES | WINDOWS
DOORS & MORE**

Welcome to Paramount

Paramount structures has revolutionized world of facade engineering with perfect combination of highly dedicated & professional team. Together everybody achieves more., Team Paramount structures commitment shall be the facade splendid structure.

Having years of experience, our core value are innovation with continues improvements. we follow hard core professionalism in every aspect of our operation there by facilitating smooth & error free production at every stage.



Vission & Mission

Team Paramount shall constantly endeavor to design and build Contemporary Glazing and Aluminium Cladding Facades by the use of innovative design systems and materials.

Paramount shares a compassion for excellence, thus result a dynamic vibrant organisation while maintaining the ethical safety environmental standards.

As the slogan of company "Exceeding Your Expectations" team paramount shall create value for stakeholders and by striving to establish new standard of innovation, quality and service continually improve over team.

Specialized in:

ACP CLADDING

Aluminium Composite Panels "ACP" is a building cladding material commonly used in internal and external wall systems for its light weight, durability and structural performance.



STRUCTURAL GLAZING



Structural Glazing can be simply defined as a continuous system of bonding of specialized glass to an aluminium frame using specialized silicone sealants.

CURTAIN WALL GLAZING

A curtain wall is an exterior covering of a building in which the outer walls are non-structural, instead serving to protect the interior of the building from the elements. Because the curtain wall façade carries no structural load beyond its own dead load weight, it can be made of lightweight materials.



SPIDER GLAZING



Spider glazing is the only option available for the larger opening elevation in the exterior and entrance of commercial and residential buildings. Spider glazing act as structural support for any high-end exterior designs.

- **PEB Structures**
- **Semi Unitized**
- **Signage**
- **Fundermax**
- **3d Visualization**
- **Sky lights, Patch Fittings**
- **Automatic Sensor Doors**
- **Aluminium Windows**
- **UPVC & Turnkey interior Works, etc...**

Landmark Projects



Sparsh Hospital, Yeshwanthpur

1

Meeting with clients, Concept the design,
Quote for the facade.

2

Check for MS structural supports, if required.
in sites Erect the Scaffolding.



People Tree Hospital, Goraguntepalya



Dhee Hospital, Kanakapura Road

3

Getting Clients approval for materials as per their requirement and Sites are supervised by expertise.

4

Execute the site As per design, Hand over the site with a smile.

Company Projects



Fortis Hospital, Nagarbhavi



RR Nagar



Kamakya



Seshadripuram



Nagarbhavi



RR Nagar



RR Nagar

W
A
L
L

O
F

F
R
A
M
E
S



HSR Layout



HSR Layout



HSR Layout



Vijaya Bank Layout



Halasuru Lake



Jakkur, Yelahanka

W
A
L
L

O
F

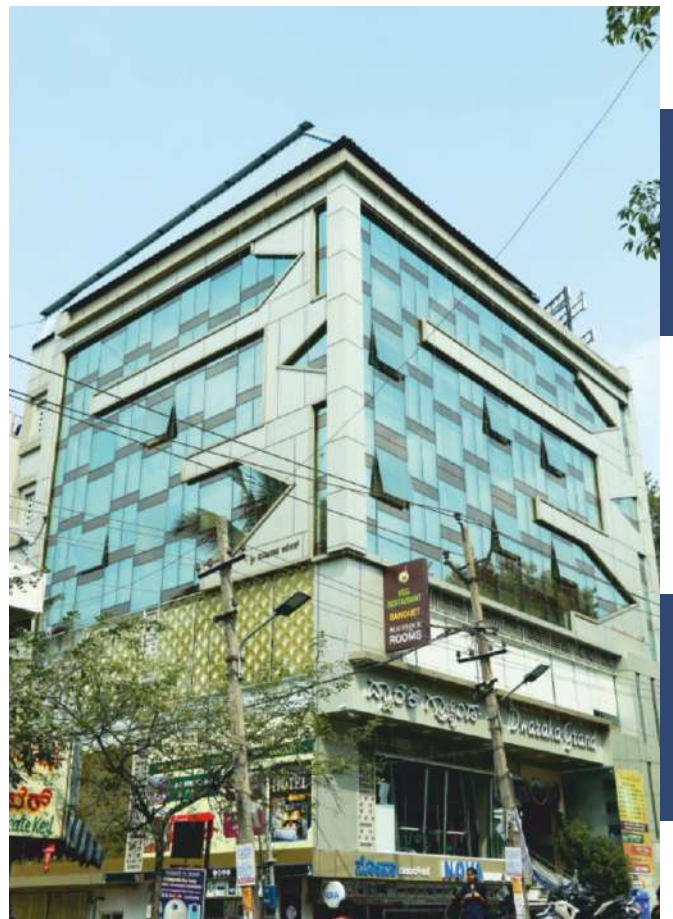
F
R
A
M
E
S



Kathriguppe



Thyagarajanagar



Kumaraswamy Layout



Kanakapura Road



Royalok, Kanakapura Road



Jayanagar



East End, JP Nagar

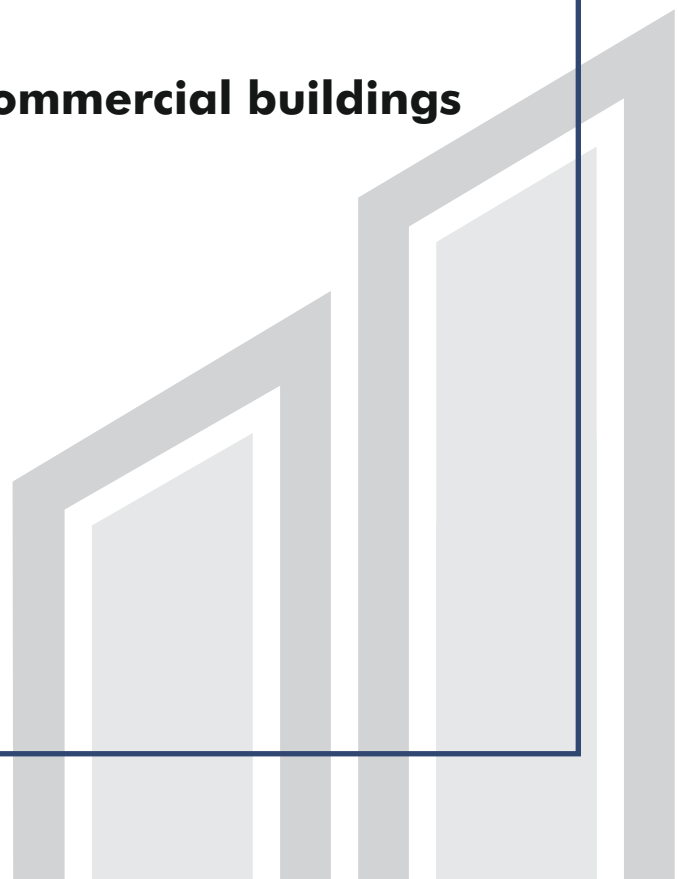
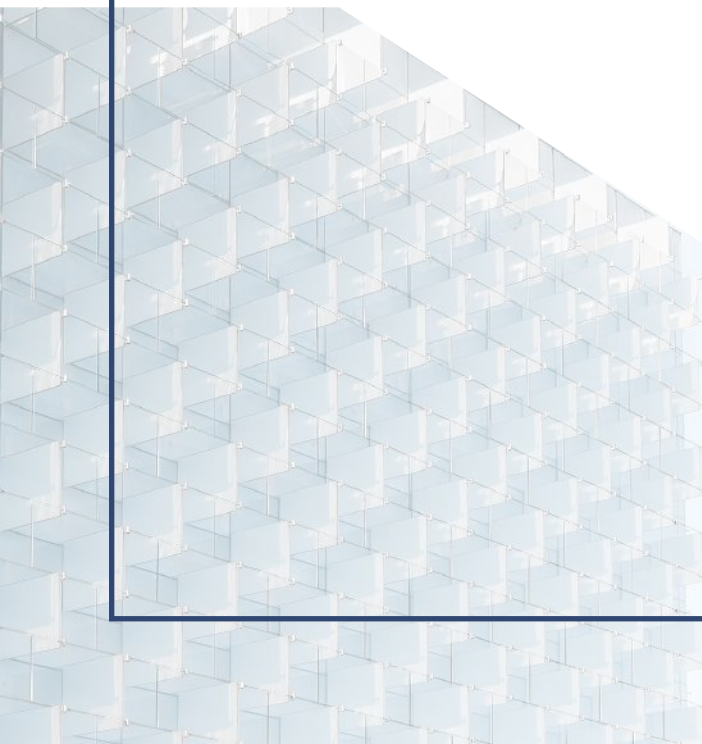
Why Paramount?

- * We have completed over 700 plus projects In & around Bangalore
- * We have dedicated Staff for their Respective Works
- * Marketing Team
- * 2D, 3D Designer Team
- * SITE Engineers
- * Facade Engineers
- * MS Fabrication Team
- * Structural Consultant
- * In house Labour Team
- * Scaffolding Team
- * Facade Cleaning Solutions

If you are associated with us then you avail the below service for your buildings

- * One time Cleaning free
- * 2 years maintenance free
- * 10 years warranty Certificate issued from respective Glass and ACP company.

Organizing Tenants for your commercial buildings



Our Esteemed Client's



CLIENT'S

Panjab National Bank | Srinagar Nurshing Home | Hasanamba Power Systems | Kandaya Bhavan, KG Road, Bangalore (KHB Product) | Deviprasad Constructions Pvt. Ltd. Bangalore | Sri Satya Sai Institute of Medical Science | Lakshman Builders | SM Motors (Force Motors), Shimoga | Kaveri International, Madikeri | Ballal Tower, Udupi | Hotel Land Mark, Kayamkulam | BA Hospital, Thumbay | Hotel Julio International, Kundapur | Manish Hospital, Kundapur | Mark Mall, Mangalore | Karnatak Bank, City point Mangalore | Unity Hall Kallapu Mangalore | M S Tower Bangalore | AVG Suzuki Showroom, Pathanamthika | Razor Think Software Bangalore | S V Infra, Bangalore | Meerams Overseas Pvt. Ltd. Bikampady | ASK Towers, Hassan | Saphire Toys, Bangalore | Royal Mart | Chris Group | 7 Hills International | Red Mount Hotel, Koramangala | Sriven Properties

Our Associate Partner's





No. 1186, Lakshmi Complex, Kempegowda Double Road,
R R Nagar, BEML Layout Stage 3, Bengaluru - 560098
E-mail : info@paramountstructures.in
www.paramountstructures.in

Call :
988 68 44 211 / 843 19 48 989

